

A New Benchmark for Sustainable Mining

Wyloo Presentation 2024

Confidentiality and disclaimer



Confidentiality

Ring of Fire Metals Pty Ltd. is a member of the Wyloo group of companies (“Wyloo” or the “Company”). Any reproduction or distribution of this presentation, in whole or in part, or the disclosure of its contents without the prior written consent of Wyloo is prohibited. All recipients agree they will keep confidential all information contained herein and not already in the public domain.

Disclaimer

This presentation has been prepared by Wyloo and is general background information about the Company’s activities at the date of this presentation and is provided in summary form only. Information contained in this presentation should not be considered to be legal, tax, investment or other professional advice.

The Company makes no representation or warranty, express or implied, as to the fairness, accuracy or completeness of the presentation and the information contained herein and no reliance whatsoever should be placed on it. Market data and statistical information contained in the presentation have been obtained from various sources (including third party sources) and the Company has not independently verified the assumptions on which that information is based and does not guarantee the accuracy or completeness of that information.

This presentation contains forward-looking statements including those regarding the business strategy, plans, targets and objectives of the management of the Company for future operations. These forward-looking statements involve known and unknown risks, uncertainties and other important factors which may cause actual results, performance or achievements to be materially different from those expressed or implied by the forward-looking statements. Certain forward-looking statements are based on assumptions or future events which may not prove to be accurate, and no reliance whatsoever should be placed on any forward-looking statements in this presentation.

All figures are in US dollars unless otherwise noted.

Abbreviations & Acronyms

B	billion
CO₂e	carbon dioxide equivalent
Cu	copper
EA	environmental assessment
k	thousand
kt	thousand tonnes
ktpa	thousand tonnes per annum
EV	electric vehicle
IBM	integrated battery facility
MW	megawatt
Mt	million tonnes
Ni	nickel
NiEq	nickel equivalent
oz	ounces
Pd	palladium
PCAM	precursor cathode active material
PGE	platinum group elements
Pt	platinum
t	tonnes
tCO₂	total carbon dioxide
tpa	tonnes per annum
tpd	tonnes per day

We are Wyloo



Global nickel producer of scale

Greenest nickel in the world

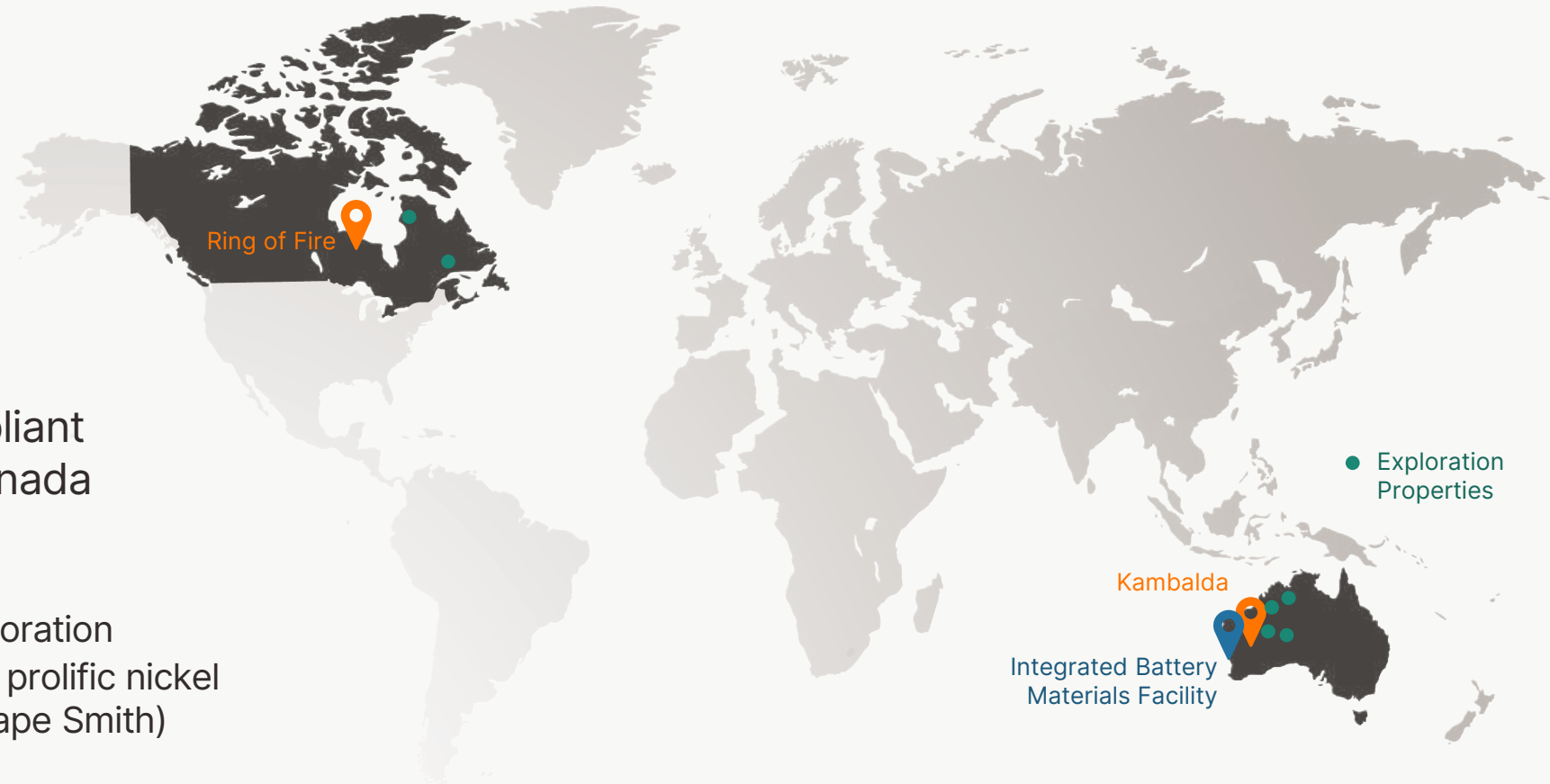
All projects located in IRA-compliant jurisdictions of Australia and Canada

Large Pipeline of Projects

- Production, development & exploration
- Dominant land package in three prolific nickel belts (Kambalda, Ring of Fire, Cape Smith)

Integrated Downstream Process

- Developing Australia's first PCAM facility, in partnership with IGO
- Proprietary refining technology: low-cost, low-carbon process
- Leveraging technology in Canada



Eagle's Nest, Ring of Fire



Cassini Mine, Kambalda

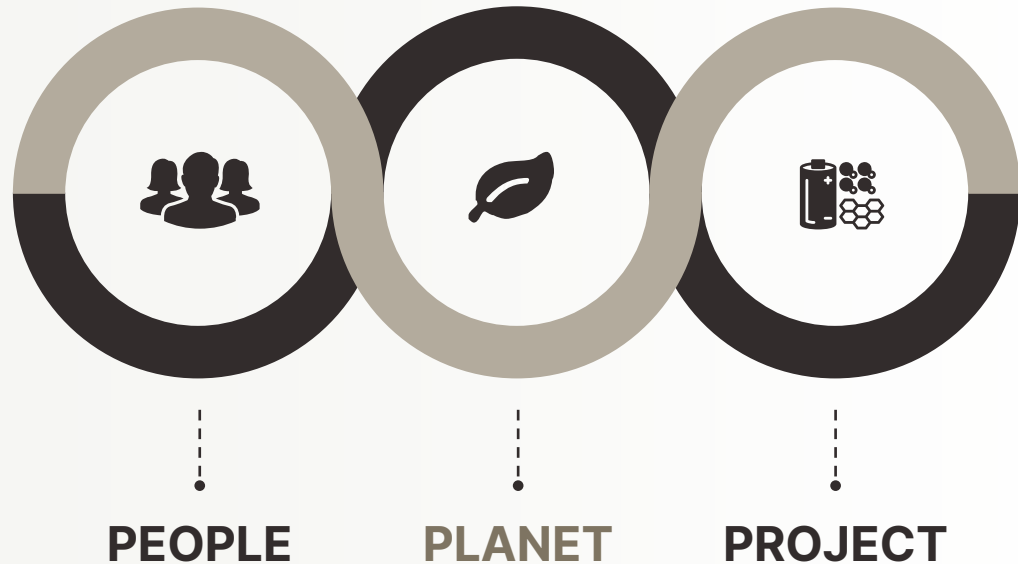


Kwinana, Western Australia

Wyloo Ring of Fire

Developing world-class operations vital for the clean energy transition

Our vision is to unearth critical minerals, innovate how we mine and process them, and sustain the planet for future generations.



In Canada, we're focusing on the Eagle's Nest Project:

- Best undeveloped high-grade nickel sulphide project in Canada
- Genuine partnership + collaboration with local communities to create prosperity and opportunity for generations to come
- Industry-leading practices and technologies that make us the **benchmark for sustainable mining**



Backed by a Global Mission



Our family of companies is driving global decarbonization through investment in critical minerals and renewable energy

With the largest philanthropy in the Southern hemisphere



A\$7.6B
philanthropic causes

GREEN CRITICAL MINERALS



\$5B
valuation

Global integrated nickel company producing **high-grade clean nickel** and other critical minerals



\$10B
valuation

Australia's largest renewable energy owner, developer and operator



GREEN ENERGY



US\$57B¹
market cap

Iron ore major & world leader in green base metals

World's largest green hydrogen & green tech co.



GREEN BASE METALS & HYDROGEN



Eagle's Nest

Ring of Fire Region, Northern Ontario

Building Eagle's Nest



Ring of Fire region home to high grade nickel, copper, cobalt, PGE and chromite

Located ~500 km northeast of Thunder Bay

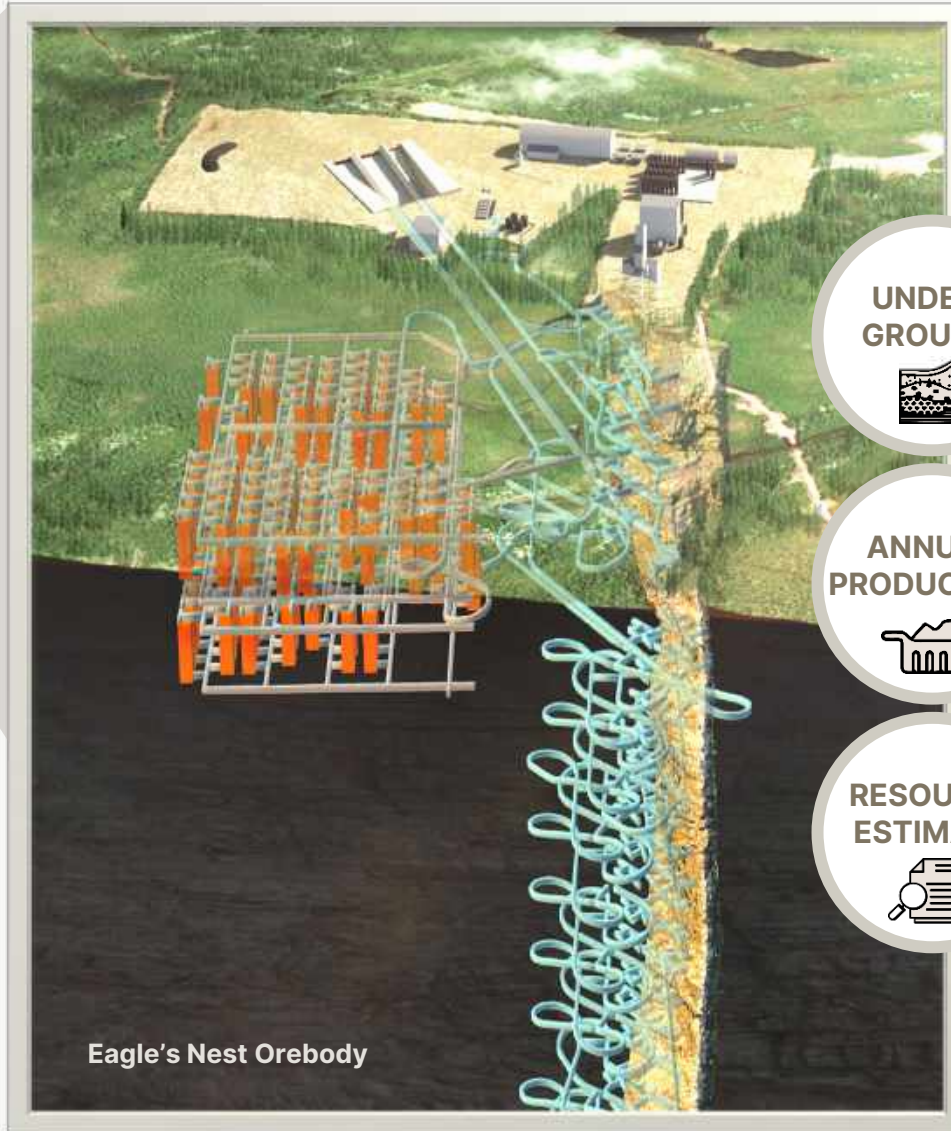
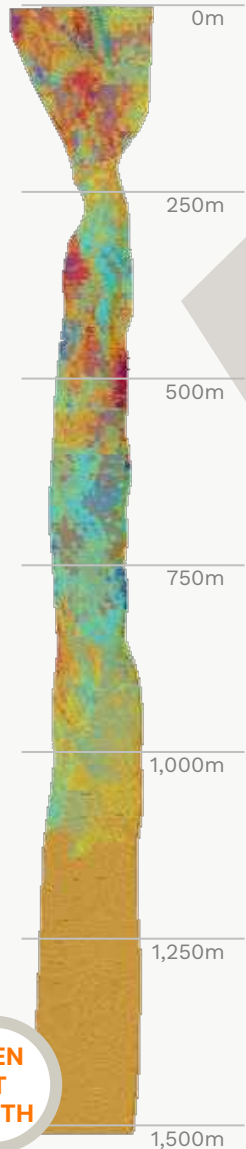
Eagle's Nest to be the **first critical minerals deposit** mined in the region



Aiming to be a net zero emissions mine

Note: Map from S&P Global. Railways adjusted to reflect recent Ontario Railway Network.

Building Eagle's Nest



20 Year
Potential Mine-Life

15,000 tpa
Nickel in Concentrate

UNDERGROUND

Traditional 3,000 tpd underground mine (blast hole open stope) with paste backfill

ANNUAL PRODUCTION

15kt Ni / 6kt Cu in separate high quality Ni / Cu concentrates → downstream processing
(also 70koz Pd / 22koz Pt / 340t Co)

RESOURCE ESTIMATE

High grade resource: 17.2Mt @ 3.56% NiEq¹ for 613kt contained NiEq; open at depth

1. Equivalent grades calculated using US\$8.50/lb Ni, US\$4.50/lb Cu, US\$45.00/lb Co, US\$1,500/oz Pd, US\$1,500/lb Pt and US\$1,750/oz Au.

To support midstream capacity

Establishing Ontario as a leader in North America's EV supply chain

Strategically located near 'highway' of gigafactories in the US and Canada

Wyloo – IGO Limited nickel processing plant:

- 30% interest in Western Australian nickel processing plant
- Proprietary refining technology; low-cost, low-carbon process
- Ability to leverage industry-leading knowledge and implement in Canada

Committing \$25M toward feasibility studies to investigate potential for battery material production in Ontario

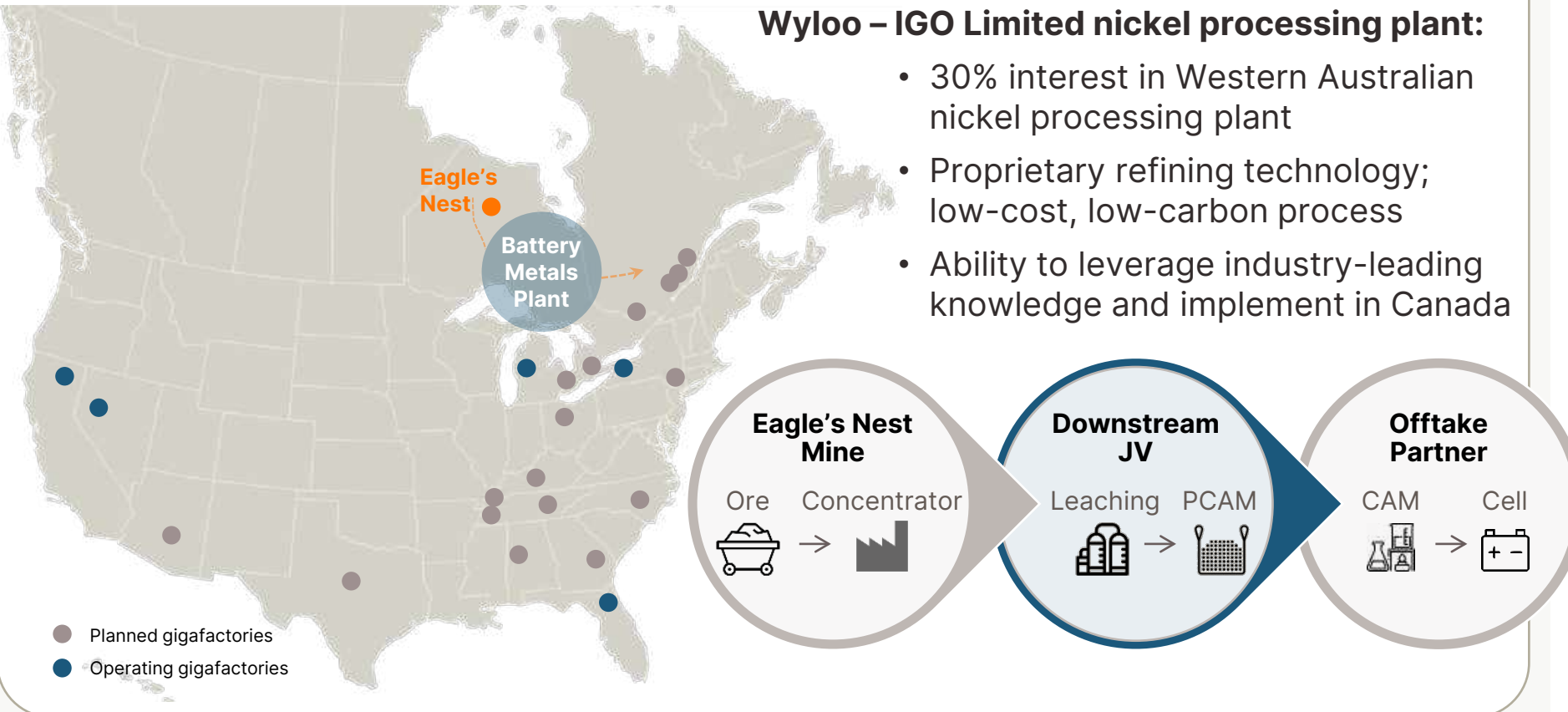
Eagle's Nest Supply:

15,000 tonnes annual nickel production could supply batteries for up to

500,000

electrical vehicles per year

- ~15% of 2030 forecast for North American EV market²



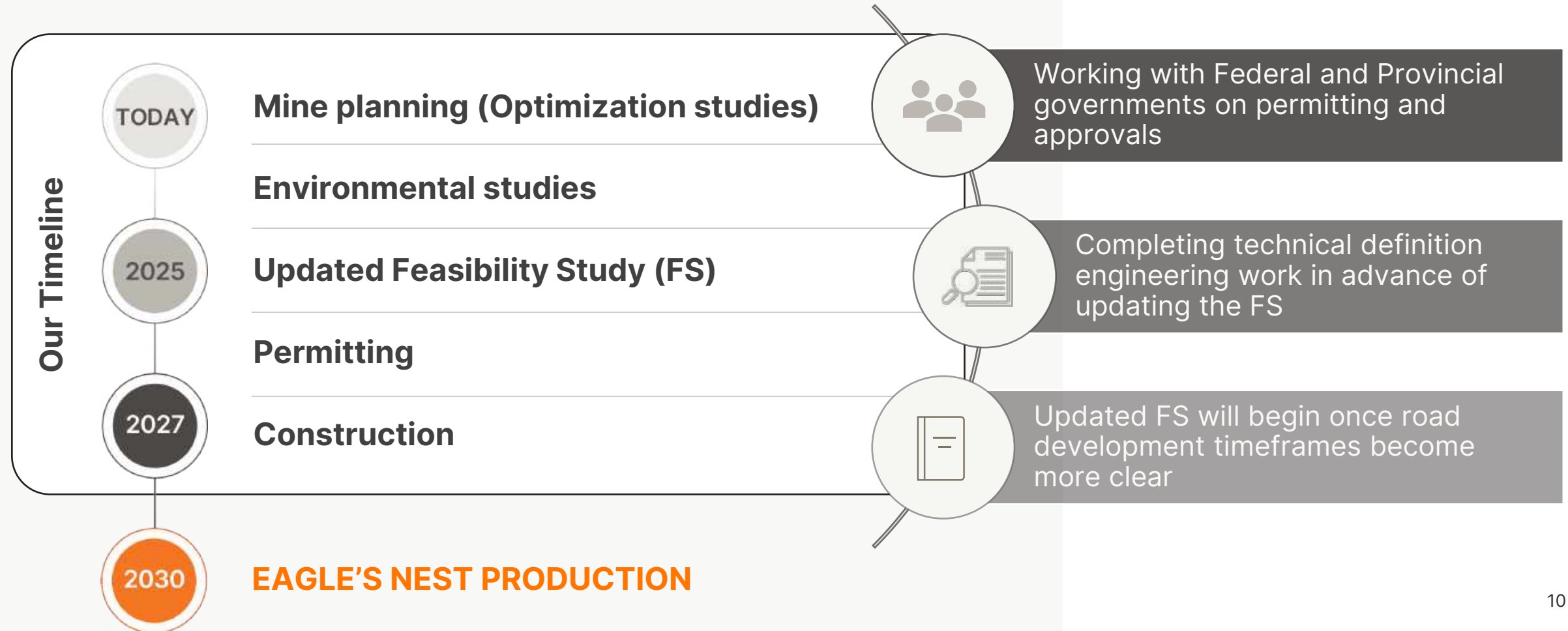
1. Based on 30kg Ni / average EV. Source: Transport & Environment (2021), *From dirty oil to clean batteries*.

2. Based on the assumed EV sales in the USA of battery electric vehicles in 2030 to meet International Energy Agency's (IEA) Stated Policies and Announced Pledges scenarios and an average EV nickel content of 30kg Ni / average EV.

Our Path to Production



Opportunity to supply Ontario and Canada with high-grade nickel sulphide mined sustainably in partnership with local communities





People

Genuine Partnerships & Collaboration
with Local Communities

Collaboration with Indigenous and Local Communities

Our vision is to develop the Ring of Fire deposits while partnering with local Indigenous communities and working alongside contractors, suppliers and surrounding communities

Signed MOUs
Memorandum of Understanding

Working towards
Partnership Agreements



First Nations Empowerment



Proven Experience:

One of Australia's largest Indigenous employers

1,100+ Indigenous people employed

A\$4B+ in contracts awarded to Indigenous-owned businesses



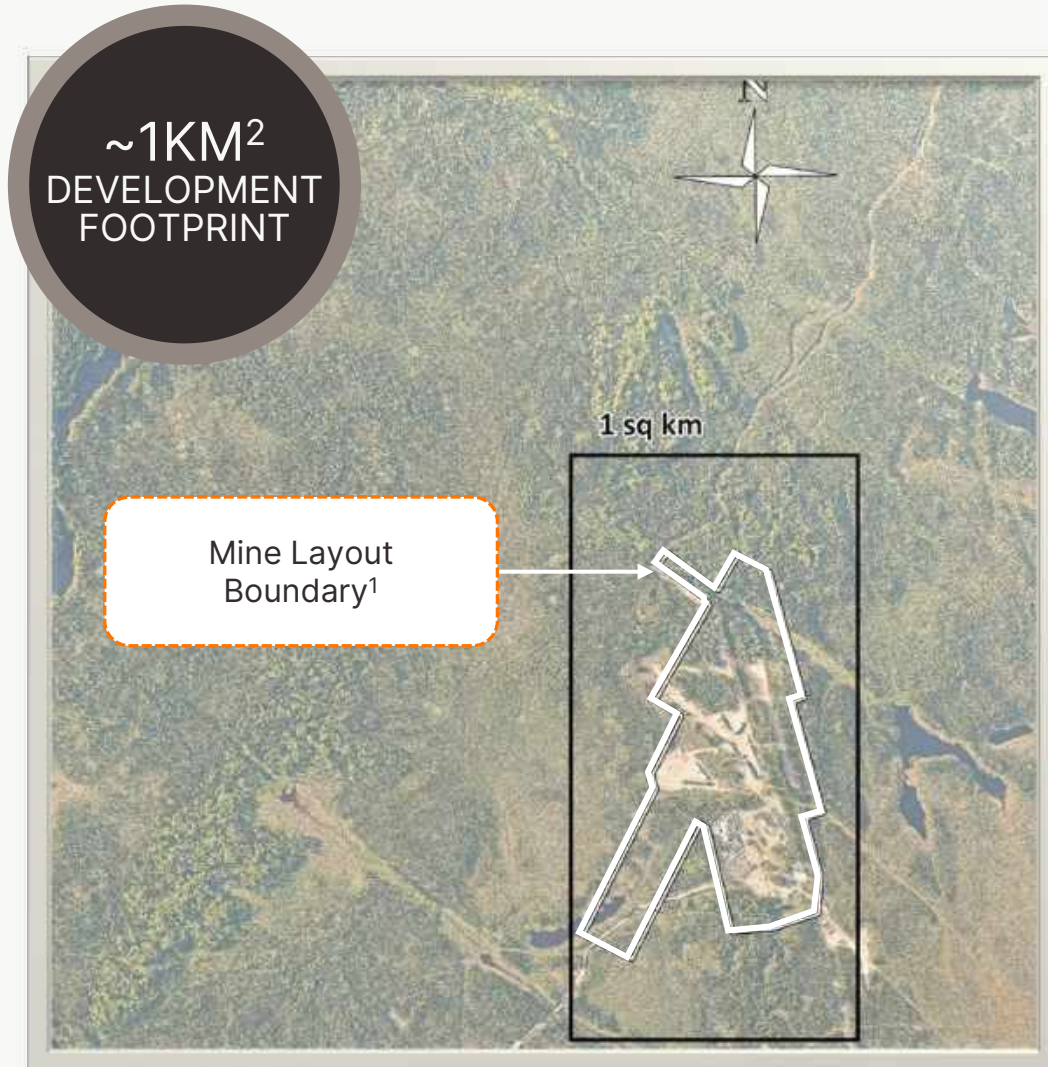
Sustainability

Sustainability at the Heart of our Design

Sustainability at the heart of our design



Minimal surface disturbance



Underground tailings storage

- **NO** → surface tailings, surface quarry, open pit, waste rockpiles
- Reduces dust generation, visual impact, inundation risks and potential run-off pollution

Mine design on uplands

- Majority of mine design on uplands (non-peat), mainly over existing Esker Camp
- Partnering with First Nations and experts to ensure global importance and cultural values of peatland are maintained for generations to come

Process water recycling plant



- Minimizes total water usage and avoids discharge of mine effluent

Environmental protection

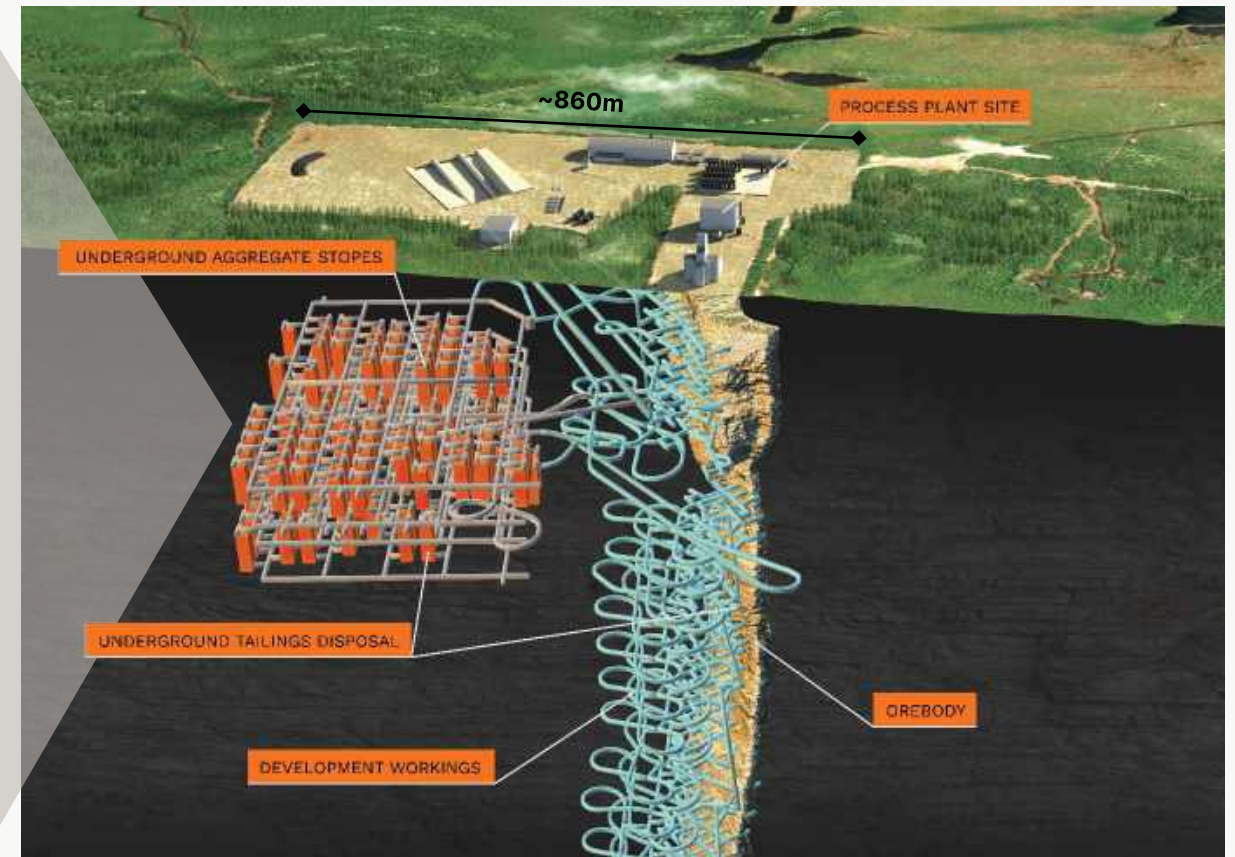
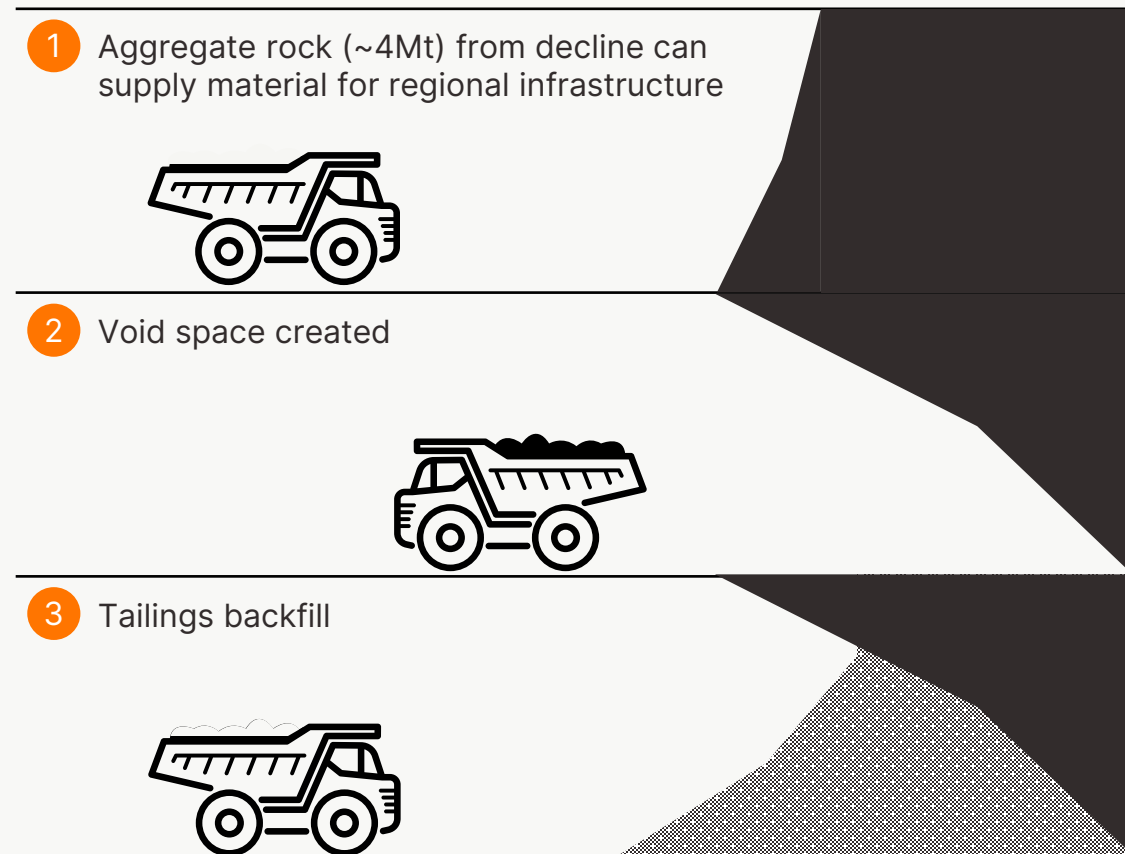
- Collecting info to understand impact to biodiversity, water quality, wetlands & aquatic life
- Committed to avoid large water bodies
- Caribou impact mitigation plans

1. Subject to final mine plan design

Underground Tailings Solution

The first mine of its kind where 100% tailings will be stored underground.

The construction of a road simultaneously with the mine removes the need for a surface tailings dam, creating one of the smallest footprint mines in the world.



Net Zero Initiatives



Going the extra mile: investigating sustainable technologies to complement existing mine design

TECHNOLOGY

All Electric Mine

High Pressure Grinding Rolls

Flotation (Jameson Cell)

RENEWABLE ENERGY / POWER

Solar / Wind Energy

Biomass Energy

ENVIRONMENT

Carbon Sequestration



zero emission EV fleet



reduction in grinding energy (10-30%)¹



smaller footprint and less energy



harnessing natural solar and wind power



sourced from organic matter



capturing + storing atmospheric CO₂ in ultramafic rock

1. Hatch Engineering November 2021.
2. Canada Energy Regulator: CER-rec.gc.ca

Our Leadership Team
Our Values



Our Leadership – Canada



Kristan Straub
CEO

previously Global Mining Executive,
Glencore Nickel



Annie Sismanian
CFO

previously CFO,
Kuya Silver



Stephen Crozier
VP Sustainability

previously VP Sustainability,
IAMGOLD



Sylvain Goyette
VP Projects

previously Manager Nickel,
Glencore



Glenn Nolan
**VP Indigenous
Enterprises**



Ryan Weston
VP Exploration

Wyloo is an organization driven by a set of values.



Humility
ር<ኅሙጋልጋ

Courage &
Determination
ሊህልገጋ & ሀላጊነት

Empowerment
ሊህልገጋ ጋር ጋር ጋር

Enthusiasm
ሰጥሙጋ

Family
ቤተሰብ

Frugality
ሊሰጥሙጋ

Generating
Ideas
ከሌሎች ጋር ጋር ጋር
ሳን ገንጠም

Integrity
ሰጥሙጋ

Safety
ሰጥሙጋ

Stretch Targets
ሰጥሙጋ
ከሌሎች ጋር ጋር ጋር

Thank You
and Miigwech

www.wyloo.com